

The YEHUDA Sherlock Holmes User Manual



Y
YEHUDA

About the Legend- Inventor of The Sherlock Holmes detector



Zvi Yehuda

Mr. Zvi Yehuda is a world renowned Scientist and Pioneer in the Diamond and Jewelry industry. His inventions have paved the way for generations to come. Here are just a few of his inventions to date:

1965—Laser Drilling of Diamonds. Some diamonds contain an internal black spot imperfection, and by using a laser he was able to drill into the black spot and clean it.

1977—The Yehuda Diamond Colorimeter, a device that examines rough diamonds and predicts their color after polishing. The Colorimeter diagnoses the entire normal scale of the D-K colors.

1982—Yehuda Clarity Enhancement- In the process he invented, a visible inclusion (called a feather) within the diamond is rendered invisible to the naked eye. He found a way to insert a microscopic amount of material that has the same optical properties as a diamond into the inclusion, using a high pressure and high temperature process.

2013-Present—The Sherlock Holmes Synthetic Diamond Detector- a device which detects CVD and HPHT synthetic diamonds in matter of seconds.

The YEHUDA Sherlock Holmes User Manual

The Yehuda detector detects **lab grown Diamonds** – loose diamonds, mounted in Jewelry, single stones, large parcels and any size Melee. It detects both **CVD and HPHT** lab grown diamonds.

This detector is designed to detect only white diamonds within **D- K colors**. Lower color diamonds, fancy color diamonds, diamond simulants, CZ, Moissanite or any other gem stones should not be tested. If in any case they are tested keep in mind that the result will be misleading and false.

Diamonds can be tested loose, in a thin plastic bag, or mounted in jewelry. They cannot be tested if covered by a thick plastic or glass!!

[Please visit our website www.yehuda.com. You can find a helpful video on how to use the detector and our most updated manual. We highly recommend checking our site for the latest manual.](http://www.yehuda.com)

Overview:

The detector uses a cellular phone.

The only use of this phone is to work with the detector. Please do not try to use this phone for any other use.

At any time, if the phone freezes – please re-start the phone.

Restarting the phone is done by pressing the ON/OFF button (left side of the detector) for a few seconds until the **RESTART** icon appears. If this action does not work, then press the ON/OFF button (left side of the detector) and the Volume button (right side of the detector) simultaneously for 10 seconds.

If at any time you receive the following message:

“Application is requesting permission to turn on the Bluetooth. Allow?”, press the “YES” button.

Warranty:

The detector has a 1 year full warranty under normal use. Using or trying to use the phone for any other purpose will result in a loss of the warranty and the detector will not be covered for any repairs.

Opening or tampering with any of the screws or trying to open the detector body will also result in a loss in warranty and refusal to fix the detector.

It does not cover water damages, being hit, dropped or any other improper care.

The machine has protective stickers. **Any attempt to open or tamper with the machine will result in an automatic loss of warranty.**

Parts:

Inside the box you will find the following:

The Sherlock Holmes Detector.

An international charger.

A tray.

Ring holders.

1 lab grown diamond in a bag.

Operation:

The charger can work in any voltage environment (100V-240V) but you need to connect the correct nozzle. **The charger must be connected at all times.**

First press the ON/OFF button at the **back** of the detector.

The **green LED** at the back of the detector should light up to indicate that the detector is ON. Then press the cell phone ON/OFF button on the left side of the phone.

If the back button (directly next to the green LED) is not pressed in – the phone will indicate that it cannot connect to the Bluetooth. Please

make sure you can see the green light is on in the back of the detector. At the end of the day, please shut off the detector by clicking the button in the back of the machine so that the green LED light is off. There is no need to shut off the phone.

When the phone starts up – it will show an upside-down home screen. Please swipe the screen, and the screen will flip.

Once the screen flips to its normal orientation, a message will prompt asking you: “Application is requesting permission to turn on Bluetooth. Allow?” Press “YES” to allow the Bluetooth to connect.

On the home screen you will only see 3 icons:

1. History
2. Test
3. Settings. (Please do not try using the settings. It is password protected and for our technician use only.)

For your confidence you can check the lab grown diamond that you have received in the clear bag. Insert the bag into the drawer.

Press the EYE icon to test.

You will see the bag inside the drawer.

Press the LOOSE DIAMOND icon to perform a test.

The sample diamond should be marked in red.

This test shows that the detector has identified your lab grown diamond and is working correctly.

It is recommended to check the sample diamond every day.

You can use our sample diamond or any other sample that you have, so long as you know for a fact that it is an actual Lab grown diamond.

After the test, you can save the result or press the back arrow to perform another test. If you are not going to perform another test – press the HOME icon.

ALWAYS MAKE SURE THAT THE DRAWER IS SHUT PROPERLY!

If the drawer is not fully shut you will get a yellow warning triangle symbol on the top right and a message:

“Warning! Please close the drawer! Ok”

Press the OK and shut the drawer. The yellow triangle symbol may remain until you press “Test”. If the drawer is shut, the next time you press the “Test” button it will disappear. If the drawer is not fully shut, you will get the message again.

If you are certain that the drawer is fully shut, but the warning message continues and/or you get another message stating: "Connection to the device is lost"—make sure that the detector is ON and the green LED light in the back of the machine is lit. [Go to the home screen](#) and the Bluetooth will reconnect again.

Then try the test.

Now you can start performing tests with the detector.

You can test mounted diamond jewelry, loose diamonds or loose diamonds in a plastic bag.

DO NOT TEST DIAMONDS IN A PLASTIC BOX (THE BLUE BOX) OR COVERED WITH A THICK PLASTIC OR GLASS. If you test diamonds in a plastic bag- make sure it is thin and clean.

The best way to test loose diamonds is uncovered in a tray or on the glass base.

It is usually ok to test them in a plastic bag if the bag is very thin and clean.

In any event – the detector detects only diamonds that it can SEE from the top. If a diamond is covered by another diamond - it will not be tested.

The same goes for jewelry - only diamonds facing the top camera will be tested.

If you test a ring or any other jewelry make sure to test it a few times

from all angles.

Insert the diamonds or the jewelry piece into the center of the drawer above the glass square. You can tap on the screen before starting the test in order to see the merchandise on the screen.

When inserting jewelry into the drawer you need to press the RING icon in order to perform the test.

When inserting loose diamonds into the drawer – you need to press the LOOSE DIAMOND icon in order to perform the test.

When you test jewelry, the detector is set to be more sensitive. This is the reason that you may see small red dots around the jewelry. Please ignore them.

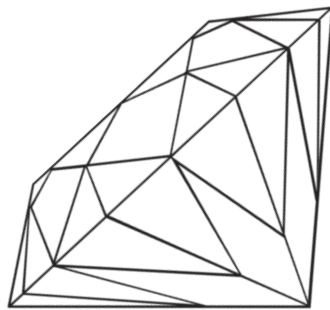
When you get the result of either mode (loose or jewelry) you can see a picture of the tested diamonds/jewelry.

Please pay attention:

The diamonds in the pictures you are about to see in the next 3 pages, are positioned with the table facing down.

This is done for the photographic purposes.

We recommend, when testing loose diamonds, to position them on the pavilion side shown in the example picture below.



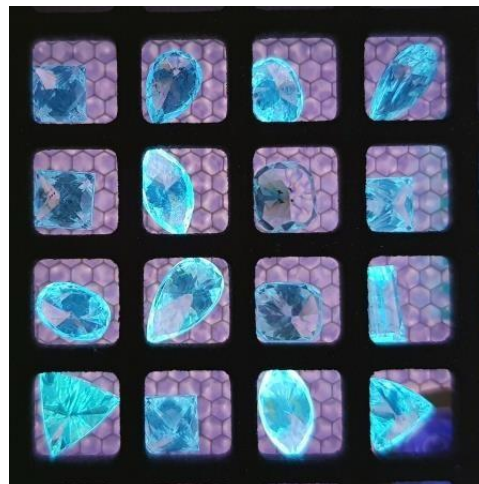
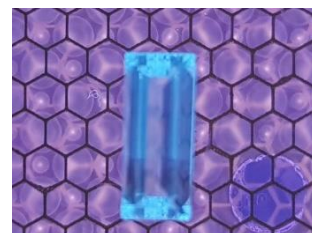
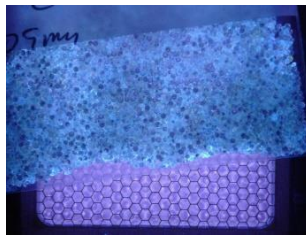
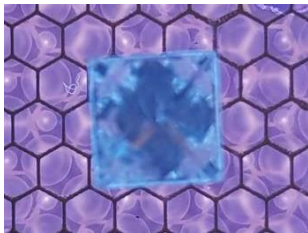
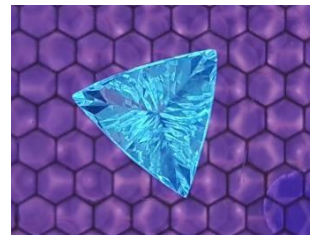
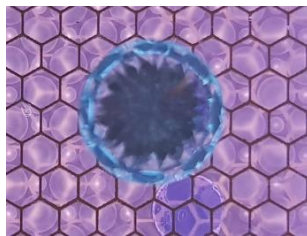
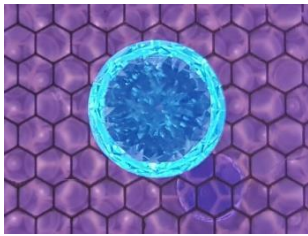
An example of a diamond lying on the pavilion

In order to know if a diamond is natural or lab grown please follow these rules:

Natural diamonds results:

Any diamond that shines **ONLY blue or light blue colors** without any red marking **means it's a natural diamond!** (Any shade of blue)

All the following are examples of NATURAL DIAMONDS



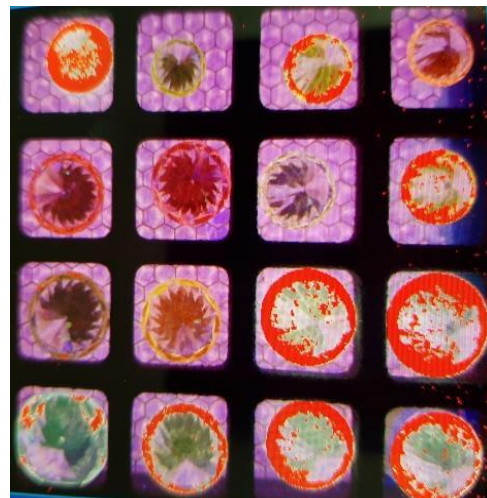
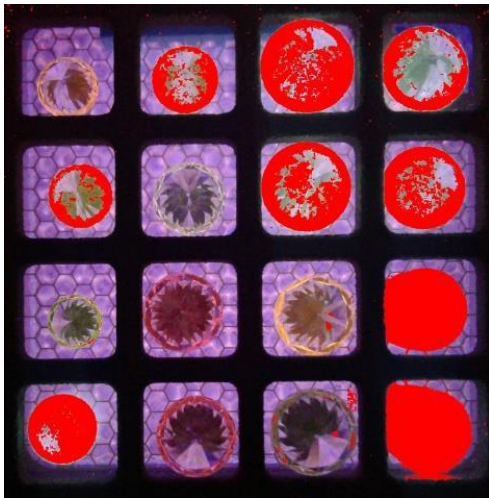
If the diamond shows any other color or red marking – it is a lab grown diamond. It is either CVD or HPHT grown.

There are a few different results that you may see from the detector – all of the below results indicate that the diamond is a Lab Grown Diamond

1. If the diamond is fully marked in **RED**. Results are (CVD OR HPHT)
2. If the diamond shines in any color (INCLUDING **blue**) AND is **partially** marked in **RED**. Results are (CVD)
3. If the diamond shines in **any color except blue**. It can be **YELLOW, GREEN, RED, ORANGE, PURPLE** results are (CVD)

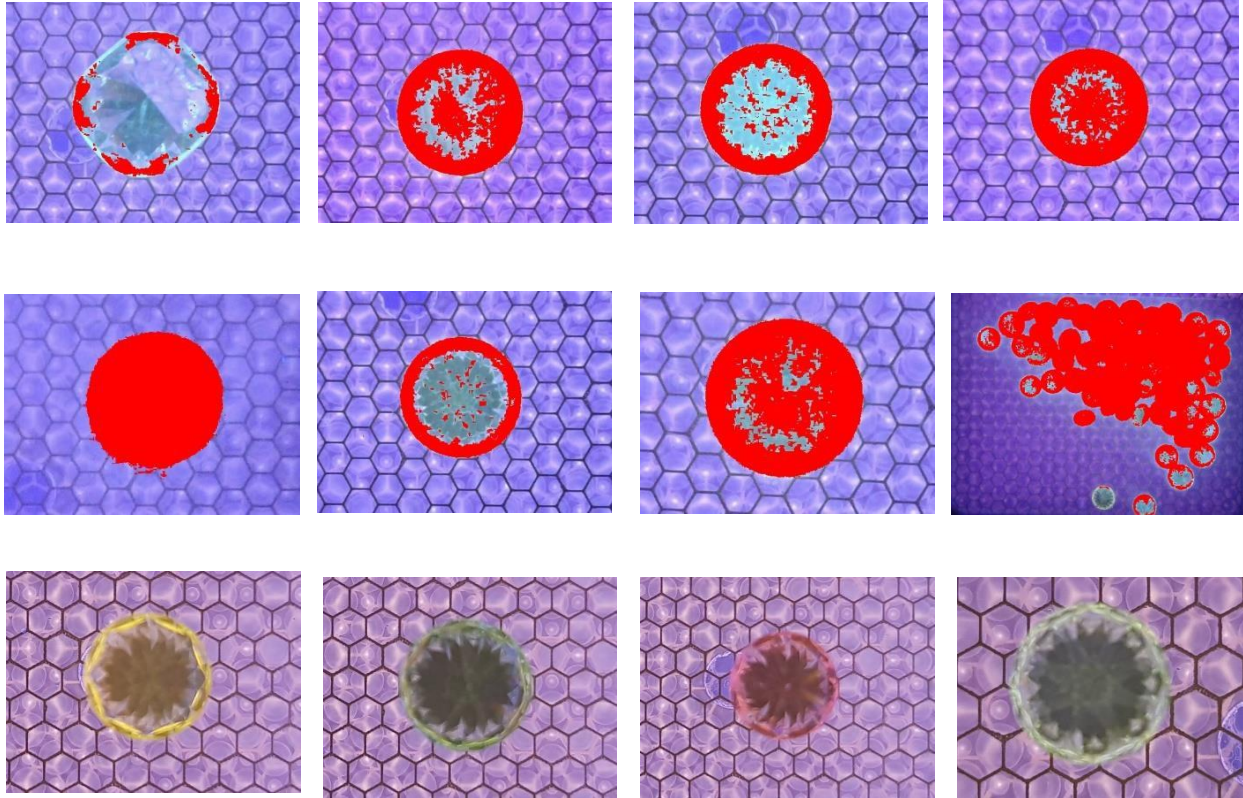
Pay attention: If the diamond shines in blue **AND** there is a red marking - the results is CVD.

Examples of results of lab grown diamonds



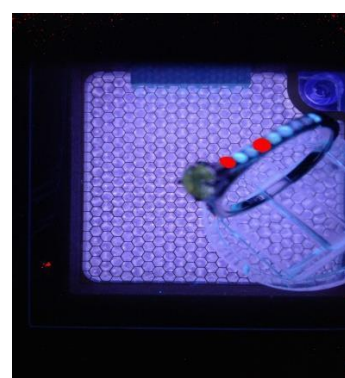
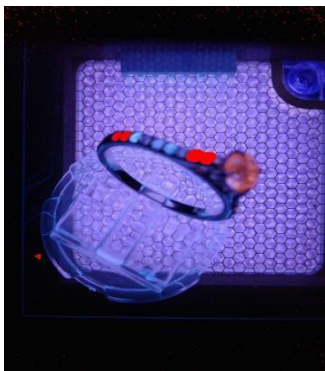
They are either marked in **red** or shine in a **NON BLUE** color.

More Examples of results of lab grown diamonds



Results of lab grown diamonds in jewelry:

The center stone and the red marked stones are lab grown diamonds.
The blue stones are Natural diamonds.



Reading the results

With most diamonds the results are very clear.

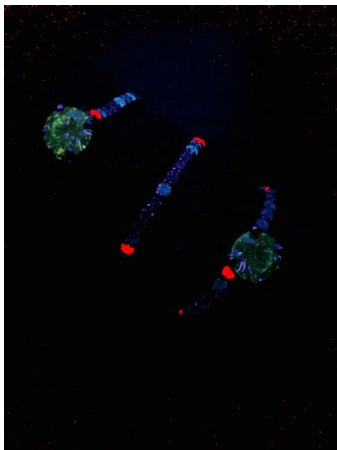
If the stone is marked in red- the diamond is a lab grown diamond.

If the diamond is not marked in red – you need to make a decision.

Is it BLUE or NOT BLUE?

If the color is BLUE then the diamond is a natural diamond.

In rare cases if it is hard for you to determine the color and you can't make a decision – please refer the stone to a gemological institute for further testing.



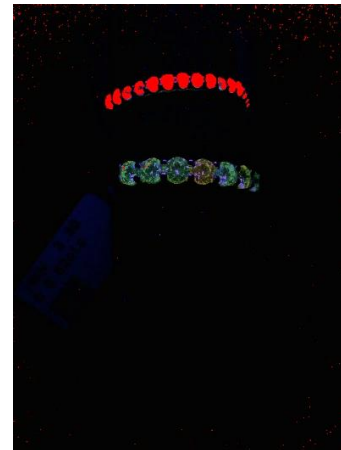
Is it BLUE or NOT BLUE?

- The two center stones are green (CVD)—NOT BLUE.
- There are a total 6 red stones (HPHT or CVD)—NOT BLUE.
- Every other stone in all 3 rings above are blue (NATURAL)—BLUE.



Is it BLUE or NOT BLUE?

- The center stone is green (CVD) —NOT BLUE.
- Every side stone in the ring is blue (NATURAL) — BLUE.
- ***If a stone looks very bright blue or very dark blue, DO NOT confuse them with other colors such as white or purple because they are all different shades of BLUE.



Is it BLUE or NOT BLUE?

- The top wedding band has a total of 15 red stones (HPHT or CVD)—NOT BLUE.
- The bottom wedding band has a total of 7 mixed green stones (CVD)—NOT BLUE.

Detection errors:

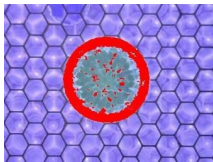
To-date, 99.9% of all known lab grown diamonds that we have checked were detected by the Sherlock Homes as lab grown diamonds.

False positive situations:

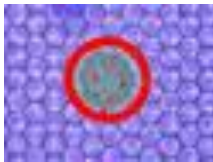
A minute amount of natural diamonds will be marked by the detector as lab grown diamonds even though they are natural diamonds.

This rare mistake of the detector will usually happen with type 2B diamonds.

Type 2B diamonds usually carry a blue or gray tint. These diamonds will show blue fluorescence with partial red marking.



There are also some very rare type 2A natural diamonds that are D or E color and show partial red marking.



Therefore - most type 2A natural diamonds will be detected as natural diamonds, (without red marking) but a few percent of them will result as false positive lab grown diamonds.

If the diamond shows blue color and partial red and it is a D or E color- we recommend to refer to a laboratory for further inspection.

There are also other natural diamonds that may show irregular results. (Blue fluorescence and partial red marking or fully marked red color).

They are very rare.

We did not encounter natural diamonds with a **NON BLUE** fluorescence and red marking. This means that if the diamond shows a NON blue fluorescence and shows red marking, it is a CVD lab grown diamond as per our testing.

At the end of the test, you can see the results as well as the different modes by pressing the headers of the results screen.

"Results"- At the end of the test you will see the results of the test. If you have pressed any other header - press the "result" again to go back to see the result of the test.

"Original picture" - Press "ORIGINAL PICTURE" to see the original picture without any markings.

"Glowing picture" - Press "GLOWING PICTURE" to see the diamonds glow in the dark.

"Colored picture"- Press "COLORED PICTURE" to see the diamonds shine. You can go back and forth between the 4 positions.

At the end of the test you can go back by pressing the ARROW or save the results by pressing the MEMORY CARD icon.

If you are done testing-press the HOME button to go back to the main screen. You may press the HISTORY icon to see the saved results.

To see the saved results press the HISTORY icon in the main home screen. The pictures are stored in the order they were taken.

Use the arrows to go back and forth between the saved pictures, or slide the top bar with your finger.

Press the "i" icon and you will get a split screen.

Now you can see all different modes.

You can tap twice on the big picture and enlarge the results. Sliding your finger on the screen enables you to move the picture. You cannot send pictures from the detector.

If you wish to send pictures please use your own cell phone and take a picture from the screen. If the memory is full or whenever you wish, you can delete a picture by pressing DELETE. Please make sure to delete older pictures as the memory card is limited

Notice:

The Sherlock Holmes detector provides a convenient and quick method of detecting synthetic diamonds. Sherlock Holmes has an accuracy rate of approximately 99%. It is not a substitute for gemological laboratory analysis. Inaccurate results may be caused by new technologies by which synthetic diamonds are created, or irregular features in either natural or synthetic diamonds, or other errors. Sherlock Holmes results should be treated as informational only.

The Sherlock Holmes results are provided "as is", with no guarantee of completeness or accuracy. Sherlock Holmes is provided without warranty of any kind, express or implied, including, but not limited to warranties of performance, merchantability and fitness for a particular purpose. In no event will the Company, its related entities, or their respective stockholders, officers, directors, agents or employees be liable to you or anyone else for any decision made or action taken in reliance on the information provided by Sherlock Holmes, or for any consequential, special or similar damages, even if advised of the possibility of such damages.

Troubleshooting:

Most of the problems arise from the phone itself.

1. **For any problem** – First make sure that the electric cord is fully inserted and screwed into the back of the detector, and the **green light LED** in the back of the machine is ON.
2. **The screen goes black** – press lightly on the ON/OFF button of the phone and swipe the screen. (On the left side of the detector)
3. **The time appears on the screen with “how is the weather”** – swipe the screen **from bottom arrow** to the top.
4. **The phone freezes-** press the ON/OFF button (left side) and hold for 10 seconds to restart the phone.
5. **The phone freezes and pressing the ON/OFF button does not help-** Press the ON/OFF button and the VOLUME button on the other side at simultaneously for 10 seconds. The phone will restart.
6. **The detector keeps showing the "close the drawer" message, even though the drawer is closed-** Make sure the **green light LED** at the back is on. Press the HOME button. The detector will reconnect to the Bluetooth and you can continue to work.

For further information, please log-on to: www.yehuda.com

Telephones: Israel: +972-3-575-1456
USA : +1-212-221-5985
India : +91-98-2051-1479
Italy : +39-0444-291418
Hong Kong : +852-2543-0543